



410 South Commercial Street · Neenah, WI 54956 · Tel: (920) 751-6800 · Fax: (920) 751-6809

To: Board of Education Members

From: Dr. Mary B. Pfeiffer, District Administrator

RE: Community Engagement Summary

Date: August 27, 2019

The summary below provides an overview of those attending the community engagement sessions in July and August of 2019. Additionally, the chart shows an overview of where the attendees live based upon their school and municipality boundary. The address information was obtained from the sign-in sheets completed at all of the community engagement sessions.

The following summary does not include board members, administrative team members, or Bray/Miron team members.

- 305 total attendees
  - 292 unique attendees with 12 people attending 2 meetings and 1 person attending 3 meetings
- 256 attendees (94.5%) identified themselves as district residents
- 54 attendees (19.9%) identified themselves as district employees
- 86 attendees (31.7%) identified themselves as a parent of a current student
  - 3 attendees identified themselves as a parent of a current student but not a district resident
- 27 attendees (10.0%) identified themselves as a district resident, a district employee, and a parent of a current student
- 159 attendees (58.7%) identified themselves as a district resident, not a district employee, and not a parent of a current student (i.e. the non-parent/non-staff group from the survey)
- 21 attendees (7.2%) did not complete the identifying information

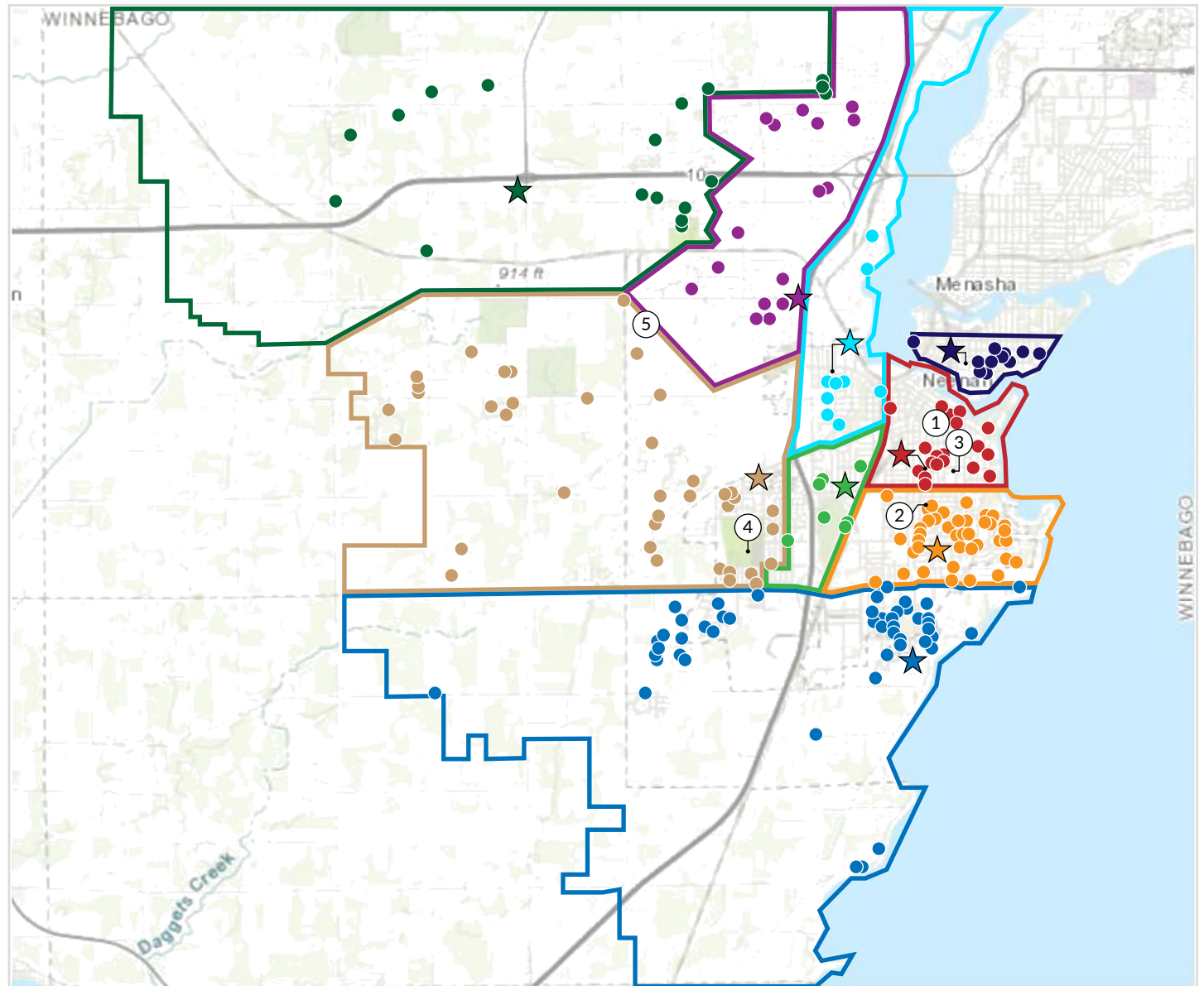
*Note: Percentages above are calculated based on 271 unique attendees who provided their home address. There were 21 attendees that did not provide their information.*

## Districts

- Clayton Elementary (26)\*
- Coolidge Elementary (57)\*
- Hoover Elementary (9)\*
- Lakeview Elementary (66)\*
- Roosevelt Elementary/  
Alliance Charter (14)\*
- Spring Road Elementary (23)\*
- Taft Elementary (11)\*
- Tullar Elementary (54)\*
- Wilson Elementary (26)\*

- ① Washington Early Learning Center
- ② Horace Mann Middle School
- ③ Shattuck Middle School
- ④ Neenah High School
- ⑤ Potential property acquisition  
by NJSD (due diligence in process)

\* Denotes number of attendees within respective elementary school boundary lines



## Municipalities

- Town of Clayton
- Village of Fox Crossing
- City of Neenah
- Town of Neenah
- Town of Vinland

- Clayton Elementary (26)\*
- Coolidge Elementary (57)\*
- Hoover Elementary (9)\*
- Lakeview Elementary (66)\*
- Roosevelt Elementary/  
Alliance Charter (14)\*
- Spring Road Elementary (23)\*
- Taft Elementary (11)\*
- Tullar Elementary (54)\*
- Wilson Elementary (26)\*

- ① Washington Early Learning Center
- ② Horace Mann Middle School
- ③ Shattuck Middle School
- ④ Neenah High School
- ⑤ Potential property acquisition  
by NJSD (due diligence in process)

\* Denotes number of attendees within respective elementary school boundary lines

